

nulogx

Transportation Management Solutions



cgfi

Canadian General Freight Index

Transportation Assessment

Acme Test Company

John Smith

August 2010



Introduction

Each month, Nulogx produces the Canadian General Freight Index (CGFI), a composite indicator of changes in freight costs for Canadian Shippers. Access to this enormous database of shipping transactions has created the ability for Nulogx to compare your company's costs to those of the broader market.

Based on this analysis of your shipping history, Nulogx estimates that your company has the opportunity to reduce expenses by 20% or more and save \$97,379 or more per month.

Assessment Details

Company:

Acme Test Company

Contact:

John Smith

john.smith@acmetestco.com

Total Freight Cost Submitted:

\$489,015/Month

Total Freight Cost Analyzed:

\$489,015/Month

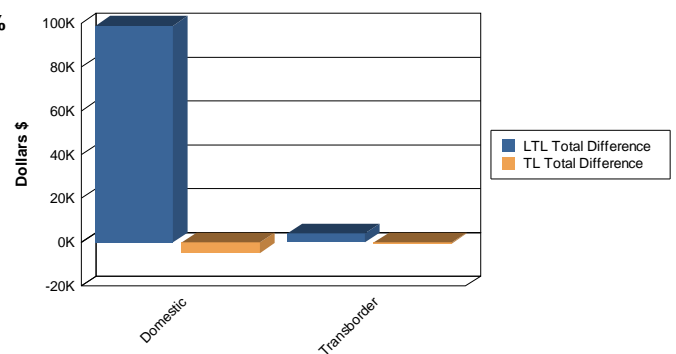
Estimated Savings:

\$97,379/Month or 20%

Total Freight \$ Analysis

(Includes Base rates, fuel surcharges and all accessorial charges)

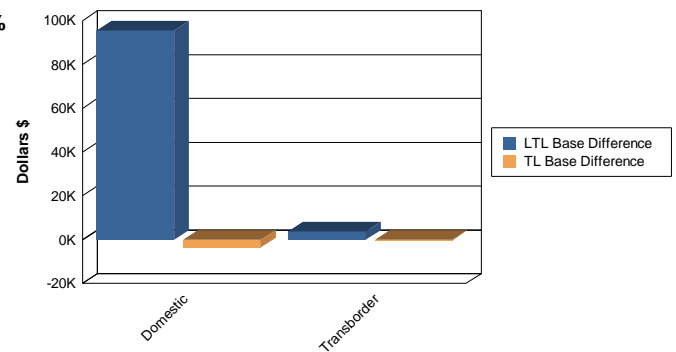
	ACME	CGFI	Variance	Variance %
Domestic				
LTL	\$454,829	\$356,032	\$98,797	22%
TL	\$10,855	\$15,723	(\$4,868)	-45%
Total	\$465,684	\$371,755	\$93,929	20%
Transborder				
LTL	\$21,831	\$17,882	\$3,949	18%
TL	\$1,500	\$1,999	(\$499)	-33%
Total	\$23,331	\$19,881	\$3,450	15%
Grand Total	\$489,015	\$391,636	\$97,379	20%



Base Freight \$ Analysis

(Excludes fuel and accessorial charges)

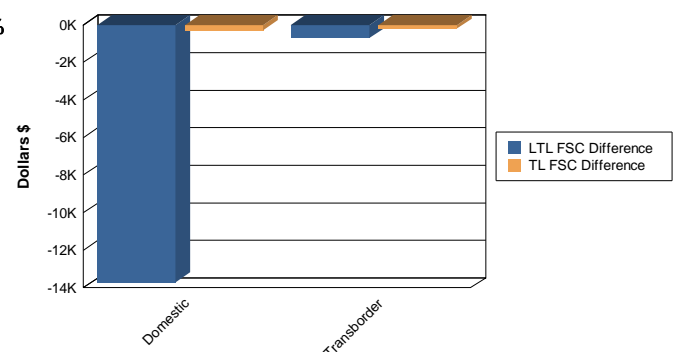
	ACME	CGFI	Variance	Variance %
Domestic				
LTL	\$411,704	\$316,187	\$95,517	23%
TL	\$9,555	\$13,211	(\$3,656)	-38%
Total	\$421,259	\$329,398	\$91,861	22%
Transborder				
LTL	\$18,966	\$15,181	\$3,785	20%
TL	\$1,500	\$1,727	(\$227)	-15%
Total	\$20,466	\$16,908	\$3,558	17%
Grand Total	\$441,725	\$346,306	\$95,419	22%



Fuel Surcharge Analysis

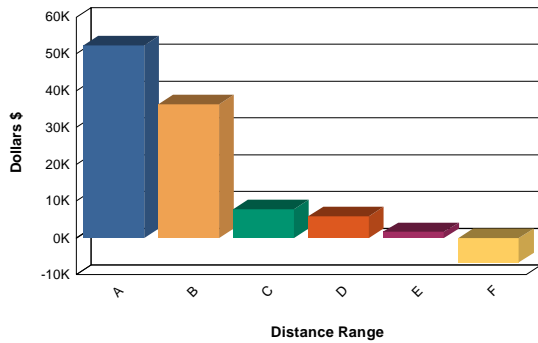
(Total fuel surcharges paid vs CGFI averages)

	ACME	CGFI	Variance	Variance %
Domestic				
LTL	\$34,550	\$48,247	(\$13,697)	-40%
TL	\$1,300	\$1,572	(\$272)	-21%
Total	\$35,850	\$49,819	(\$13,969)	-39%
Transborder				
LTL	\$1,744	\$2,436	(\$692)	-40%
TL	NA	\$195	NA	NA
Total	\$1,744	\$2,631	(\$887)	-51%
Grand Total	\$37,594	\$52,450	(\$14,856)	-40%

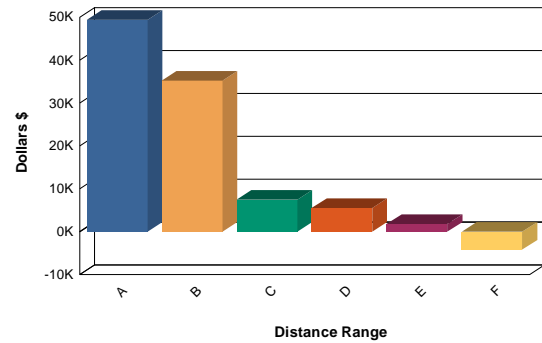


Length of Haul Comparison*

Total Freight Variance Distance Analysis



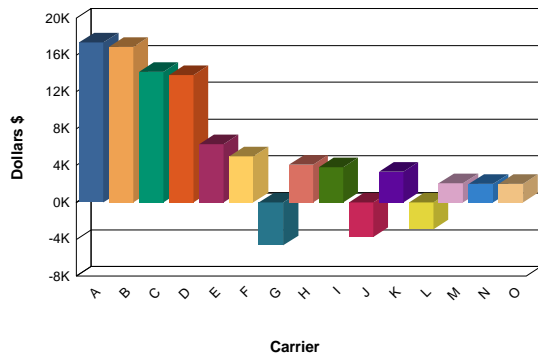
Base Freight Variance Distance Analysis



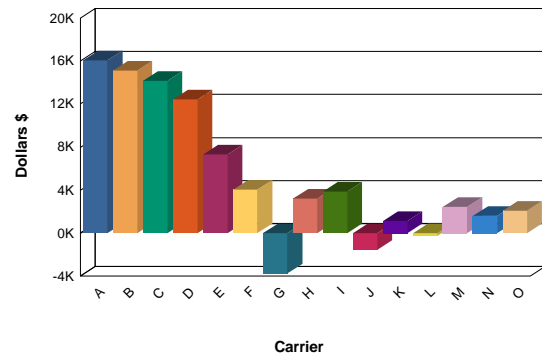
*Distance groupings sorted based on opportunity side, not actual distance.

Carrier Comparison*

Total Freight Variance Carrier Analysis



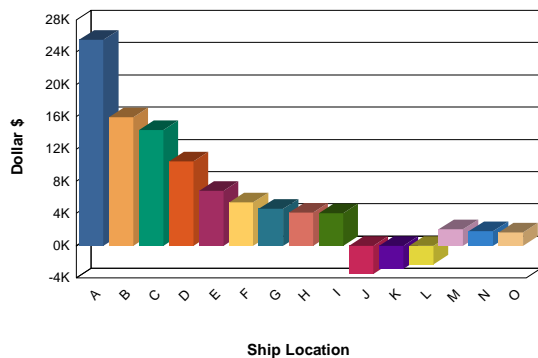
Base Freight Variance Carrier Analysis



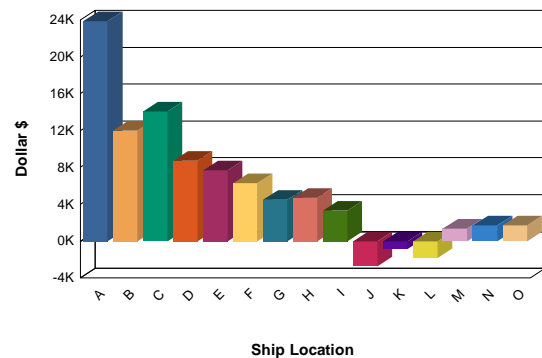
*Top 15 Carrier Total Freight variances calculated using the CGFI.

Ship Location Comparison*

Total Freight Variance Ship Location Analysis



Base Freight Variance Ship Location Analysis



*Top 15 Ship Location variances calculated using the CGFI, based on origin postal/zip code.

Summary Statistics

(LTL <= 20,000; TL > 20,000)

	ACME	CGFI	Variance	Variance %
\$/LB (LTL)	\$0.11	\$0.10	\$0.01	9%
\$/Mile (TL)	\$1.32	\$2.06	(\$0.74)	-56%
Fuel Surcharge (All)	8.5%	13.1%	-4.6%	-54%
Accessorials (All)	2.2%	3.0%	-0.8%	-36%
\$/Ton Mile (LTL)	\$0.39	\$0.23	\$0.16	41%
\$/Ton Mile (TL)	\$0.09	\$0.12	(\$0.03)	-33%
\$/Ton Mile (All)	\$0.36	\$0.18	\$0.18	50%
Avg Ship Weight (LTL)	1,415 LB	2,628 LB	-1,213 LB	-86%
Avg Ship Weight (TL)	30,773 LB	32,049 LB	-1,276 LB	-4%
Avg Ship Weight (All)	1,511 LB	5,887 LB	-4,376 LB	-290%
Avg Ship Distance (LTL)	512 MI	874 MI	-362 MI	-71%
Avg Ship Distance (TL)	934 MI	634 MI	300 MI	32%
Avg Ship Distance (All)	513 MI	848 MI	-335 MI	-65%

About Nulogx

Nulogx Inc, a leading Transportation Management Solutions company that provides information and services to strategically manage the transportation process and reduce costs. Nulogx's unique approach of combining Managed Services with a best in class Online TMS Application and the largest Freight Audit and Payment operation in Canada allows us to offer exceptional value to customers. As a processor of over \$750M per year in freight transactions and representing nearly 1000 carriers, Nulogx is positioned to offer both strategic and tactical solutions to its customers. The creation of the CGFI is one example of these capabilities.

About the Canadian General Freight Index

The Canadian General Freight Index is created monthly by analysing an unidentified sample of over-the-road freight transactions drawn from Nulogx's database of recent freight movements. A complex multi-variable regression analysis is used to determine the relationships between costs, weights, distances and geographies for traditional dry-van freight. The database does not include local, bulk, expedited or courier-type shipments.

Assessment Methodology

Each qualified shipping transaction available from your company was compared to CGFI predictive algorithms, and a variance was calculated. These variances are summarized in this report.

Please note that transaction data provided by your company was analysed and filtered using proprietary algorithms to ensure accuracy and the most accurate comparison possible to the observations in the CGFI database. As a result, only a sample of the data provided was used in this analysis. The variances reported are for the sample analysed, not the entire spend submitted, or the entire spend of your company.

All comparisons are to CGFI values, which may or may not have similar characteristics to the commodities your company is shipping or the markets or customers you are serving. While at an aggregate level this assessment will highlight areas for improvement, it does not serve as a definitive assessment of the potential cost for each individual shipment.

Contact Information

Nulogx

2233 Argentia Road, Suite 202
Mississauga, Ontario
L5N 2X7
info@nulogx.com
1.877.9Nulogx (1.877.968.5649)

Doug Payne

President
doug.payne@nulogx.com
www.nulogx.com
www.cgfi.ca
blog.nulogx.com